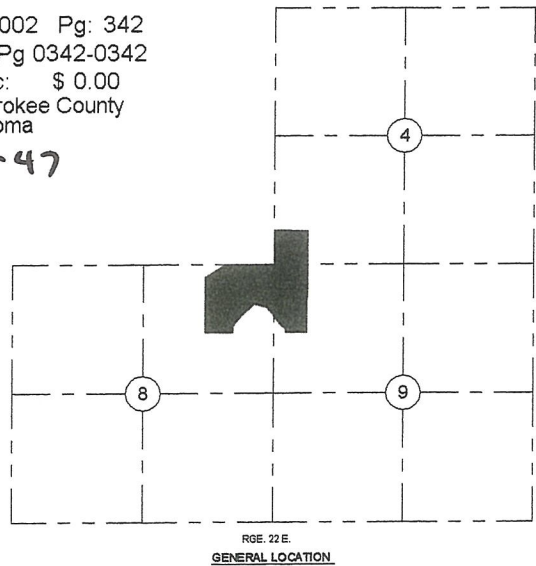


Plat Cab C-47



A PLAT OF

THE MOUNTAIN OF SOUTHRIDGE

CITY OF TAHEQUAH
A SUBDIVISION OF A PART OF
SECTIONS 4, 8 & 9, TOWNSHIP 16 NORTH, RANGE 22 EAST
CHEROKEE COUNTY, OKLAHOMA



OWNERS CERTIFICATE AND DEDICATION

KNOW ALL MEN BY THESE PRESENTS: THAT THE SOUTHRIDGE DEVELOPMENT COMPANY, LLC, AN OKLAHOMA LIMITED LIABILITY COMPANY, IS THE OWNER OF THE PROPERTY SHOWN AND DESCRIBED ON THE ANNEXED PLAT HEREON OF THE MOUNTAIN OF SOUTHRIDGE SUBDIVISION, A SUBDIVISION OF A TRACT OF LAND LYING IN AND BEING A PART OF THE 1/4 1/4 NW 1/4 OF SECTION 9 AND A PART OF THE NE 1/4 NW 1/4 OF SECTION 8 AND A PART OF THE SW 1/4 NW 1/4 OF SECTION 4 ALL IN TOWNSHIP 16 NORTH RANGE 22 EAST, CHEROKEE COUNTY, OKLAHOMA, MORE PARTICULARLY DESCRIBED AS FOLLOWS, TO-WIT: BEGINNING AT THE NORTHEAST CORNER OF THE NE 1/4 NW 1/4 OF SAID SECTION 8; THENCE N89°58'18\"/>

SOUTHRIDGE DEVELOPMENT COMPANY, LLC
AN OKLAHOMA LIMITED LIABILITY COMPANY
SCOTT WRIGHT, MANAGING MEMBER

NOTARY PUBLIC

STATE OF OKLAHOMA)
CHEROKEE COUNTY) SS

BEFORE ME, THE UNDERSIGNED A NOTARY PUBLIC, IN AND FOR SAID COUNTY AND STATE, ON THIS 17TH DAY OF November, 2010, PERSONALLY APPEARED SCOTT WRIGHT, TO ME KNOWN TO BE THE IDENTICAL PERSON WHO SUBSCRIBED THE NAME OF THE MANAGER THEREOF TO THE WITHIN AND FOREGOING INSTRUMENT AS ITS MANAGING MEMBER AND ACKNOWLEDGED TO ME THAT HE EXECUTED THE SAME AS HIS FREE AND VOLUNTARY ACT AND DEED AND AS THE FREE AND VOLUNTARY ACT AND DEED OF SUCH LIMITED LIABILITY COMPANY, FOR THE USES AND PURPOSES THEREIN SET FORTH.

GIVEN UNDER MY HAND AND SEAL OF OFFICE THE DAY AND YEAR LAST ABOVE WRITTEN.

MY COMMISSION EXPIRES 7/24/11
MY COMMISSION NUMBER 07007044

SHAWNA SHELL
NOTARY PUBLIC-STATE OF OKLAHOMA
CHEROKEE COUNTY
My COMMISSION EXPIRES Jul. 24, 2011

COUNTY TREASURER'S CERTIFICATE

I, INEZ PEACE, DO HEREBY CERTIFY THAT I AM THE DULY ELECTED, QUALIFIED AND ACTING COUNTY TREASURER OF CHEROKEE COUNTY, OKLAHOMA, AND THAT THE TAXES ARE PAID FOR THE YEAR 2010 AND PRIOR YEARS ON THE LAND SHOWN AND DESCRIBED ON THE PLAT HEREON OF THE MOUNTAIN OF SOUTHRIDGE SUBDIVISION, TO THE CITY OF TAHEQUAH, OKLAHOMA.

SURVEYOR'S CERTIFICATE

I, JAMES RAY CHAFFIN, JR., A REGISTERED PROFESSIONAL LAND SURVEYOR, DO HEREBY CERTIFY THAT THE PLAT HEREON CORRECTLY REPRESENTS A SURVEY MADE UNDER MY SUPERVISION ON THE 17th DAY OF November, 2010, AND THAT ALL MONUMENTS SHOWN HEREON ACTUALLY EXIST AND THEIR POSITIONS ARE CORRECTLY SHOWN. I FURTHER CERTIFY THAT THIS PLAT MEETS THE OKLAHOMA MINIMUM STANDARDS FOR THE PRACTICE OF LAND SURVEYING AS ADOPTED BY THE OKLAHOMA STATE BOARD OF REGISTRATION FOR PROFESSIONAL ENGINEERS AND LAND SURVEYORS.

CITY PLANNING COMMISSION APPROVAL

I, CHARLES CARROL, CHAIRMAN OF THE CITY PLANNING COMMISSION, TAHEQUAH, OKLAHOMA, DO HEREBY CERTIFY THAT THE SAID COMMISSION DULY APPROVED THE PLAT HEREON OF THE MOUNTAIN OF SOUTHRIDGE SUBDIVISION, TO THE CITY OF TAHEQUAH, OKLAHOMA, ON THIS 17th DAY OF November, 2010.

ATTEST: [Signature] SECRETARY

ACCEPTANCE OF DEDICATIONS BY CITY COUNCIL

BE IT RESOLVED BY THE MAYOR AND CITY COUNCIL OF THE CITY OF TAHEQUAH, OKLAHOMA, THAT THE DEDICATIONS SHOWN ON THE PLAT HEREON OF THE MOUNTAIN OF SOUTHRIDGE SUBDIVISION, TO THE CITY OF TAHEQUAH, OKLAHOMA, ARE HEREBY ACCEPTED.
ADOPTED BY THE MAYOR AND CITY COUNCIL, TAHEQUAH, OKLAHOMA, THIS 17th DAY OF November, 2010.

ATTEST: [Signature] CITY CLERK

[Signature] MAYOR