

INTRODUCING

# The Gardens of SouthRidge

## A Premier Gated Community

**QUALITY RESIDENCES AVAILABLE FOR LEASE**



**GARDEN LAKE** ... with it's magnificent fountain, is the heart of this prestigious gated community. Every detail has been considered to create a unique residential lifestyle, including a garden area with gazebo, a club house with exercise room overlooking Garden Lake, a large lakeside patio for special social events, and attractive residences. This Community creates a secure environment for the residents.

***Tahlequah's Premier Residential Gated Community***



For Further Information and Availability, Contact



**Emery Silvernail**

Business Manager

**918-822-7207**

[busmgr@century21wright.com](mailto:busmgr@century21wright.com)

103 Mimosa Lane Tahlequah, OK 74464 / A Broker Owned Property



SEE COMPLETE DETAILS AT ....

**[www.GardensofSouthridge.com](http://www.GardensofSouthridge.com)**



12-1-22

[info@southridge.net](mailto:info@southridge.net)



[www.Southridge.net](http://www.Southridge.net)

# ABOUT ....

## The Gardens of SouthRidge

### Quality Residences For Lease

The quality full brick residences have outstanding floor plans featuring 2 spacious bedrooms, 2 1/2 baths with private baths for each bedroom, walk-in closets, an additional guest restroom, large great room with gas log fireplace, separate office area, exceptional kitchen with all appliances, fantastic covered patio with BBQ area, central heat & air conditioning, ceiling fans, floored attic storage area, enclosed garage with door opener, complete fire and security alarm systems, and many more custom features throughout.

These Luxury Residences in this Gated Community are Available for Long Term Lease, which includes full ClubHouse access.



For Further Information and Availability, Contact



**Emery Silvernail**

Business Manager

918-822-7207

busmgr@century21wright.com

103 Mimosa Lane Tahlequah, OK 74464 / A Broker Owned Property

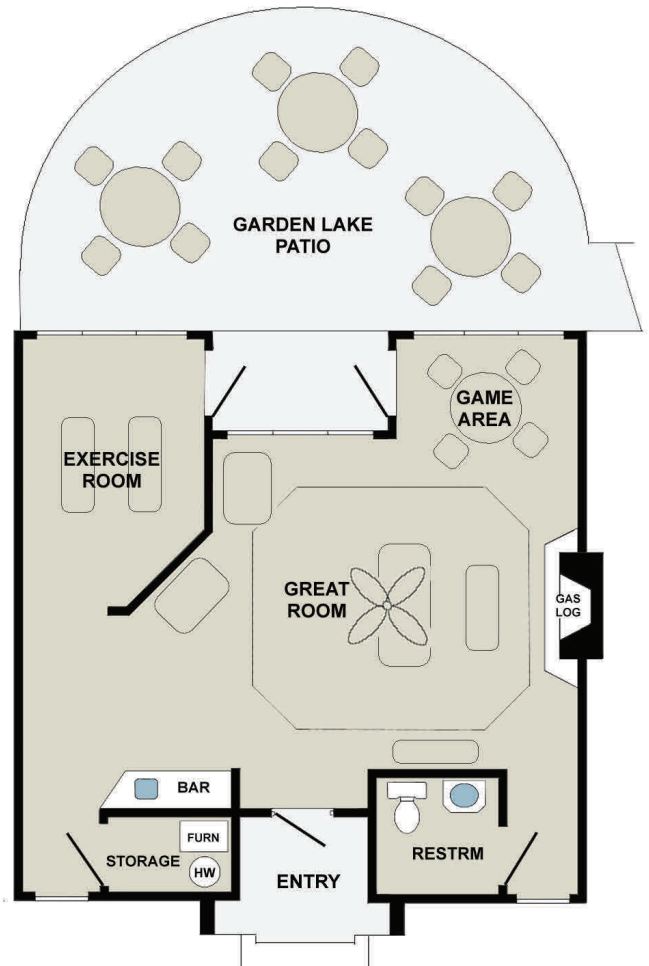
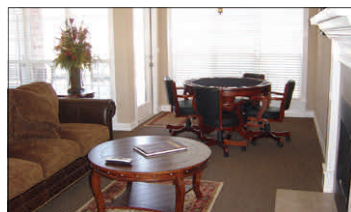
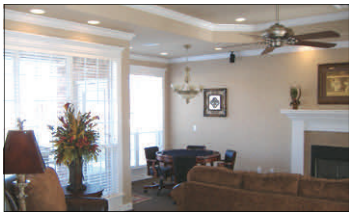


## The ClubHouse . . . .



The Clubhouse is that perfect place to entertain guest, or just get-away from the stress from the large patio overlooking Garden Lake. Features include complete furnishings, television, gaming table and bar area. Plus ... there is a complete exercise room ready for maintaining a healthy lifestyle.

area. Plus ... there is a complete exercise room ready for maintaining a healthy lifestyle.



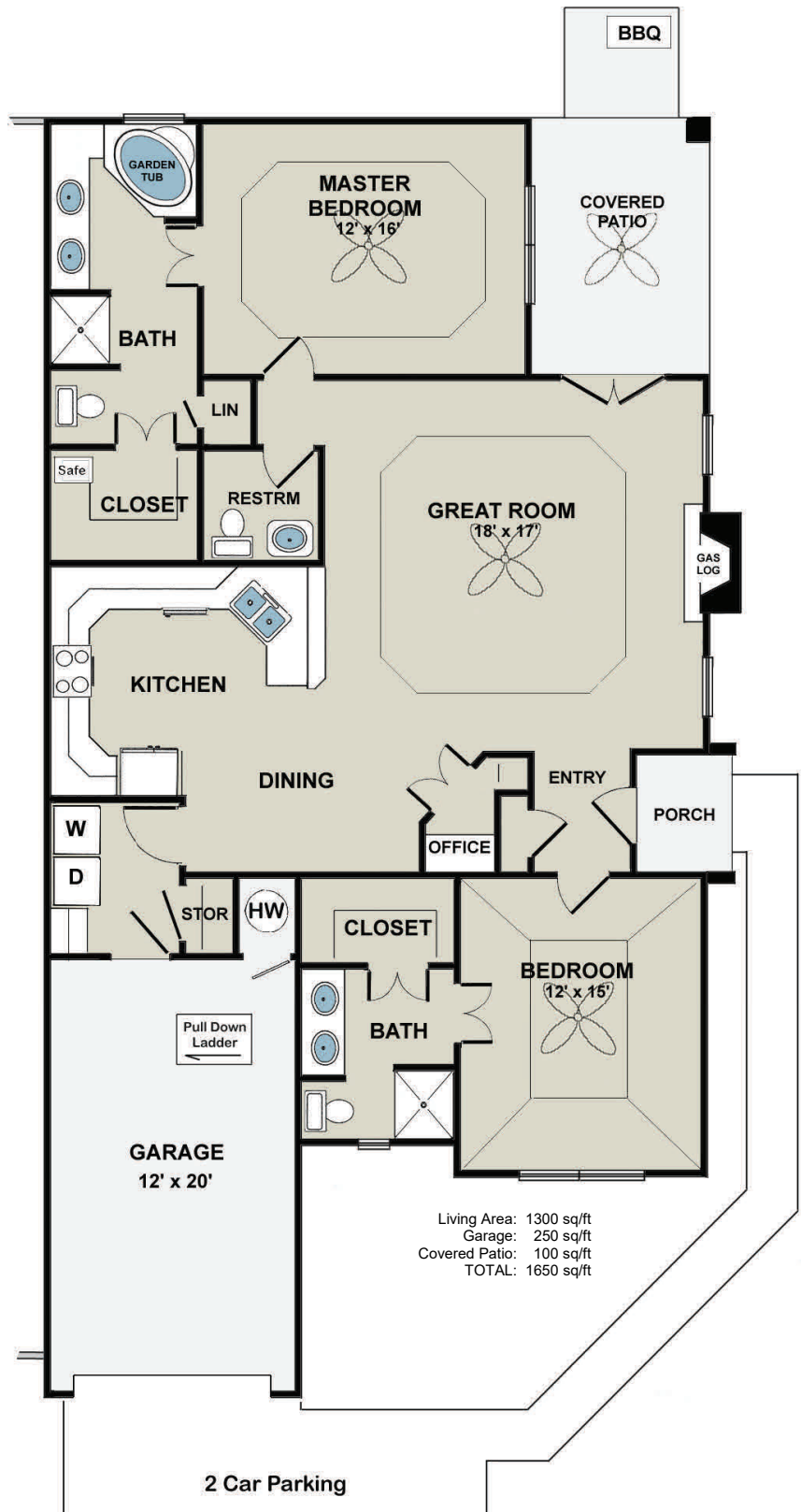
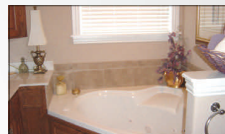
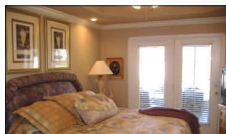


# QUALITY RESIDENCES .... OUTSTANDING FLOOR PLANS



## Many Features Include:

- ▶ Energy Efficient Full Brick
- ▶ Great Floor Plan with over 1300 sq/ft
- ▶ 2 Spacious Bedrooms With Private Baths
- ▶ Large Walk-in Closets
- ▶ Separate Additional Guest Restroom
- ▶ Central Heat & Air Conditioning
- ▶ Super Great Room
- ▶ Fireplace with Gas Log
- ▶ Pantry or Desk Area
- ▶ Outstanding Kitchen with Breakfast Bar
- ▶ Enclosed Garage with Door Opener
- ▶ Outstanding Cover Patio Plus BBQ Area
- ▶ Floored Attic Storage Area
- ▶ Security & Fire Alarm System
- ▶ Plus Many Other Custom Features



SEE COMPLETE DETAILS AT ....

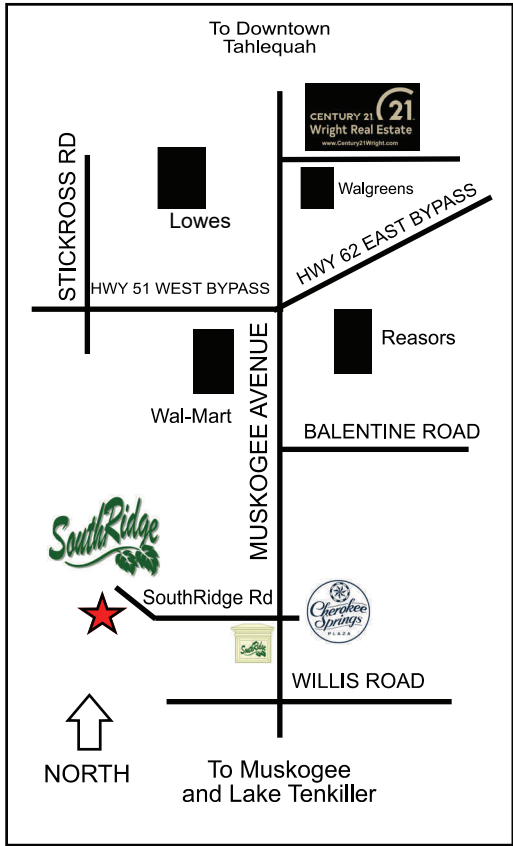
[www.GardensofSouthridge.com](http://www.GardensofSouthridge.com)

[info@southridge.net](mailto:info@southridge.net)

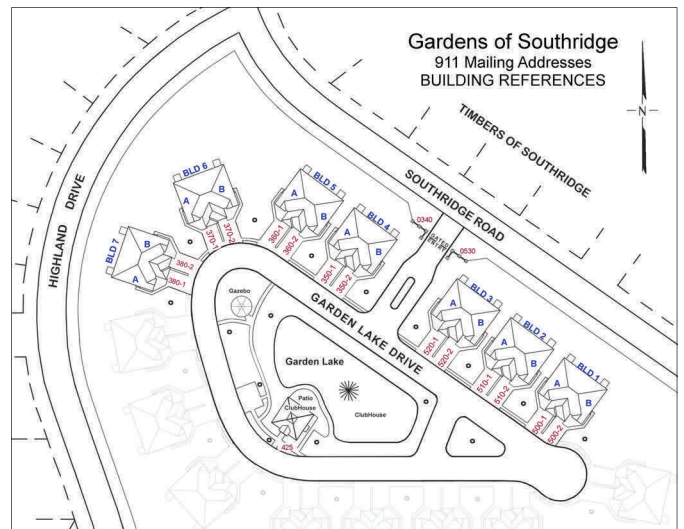
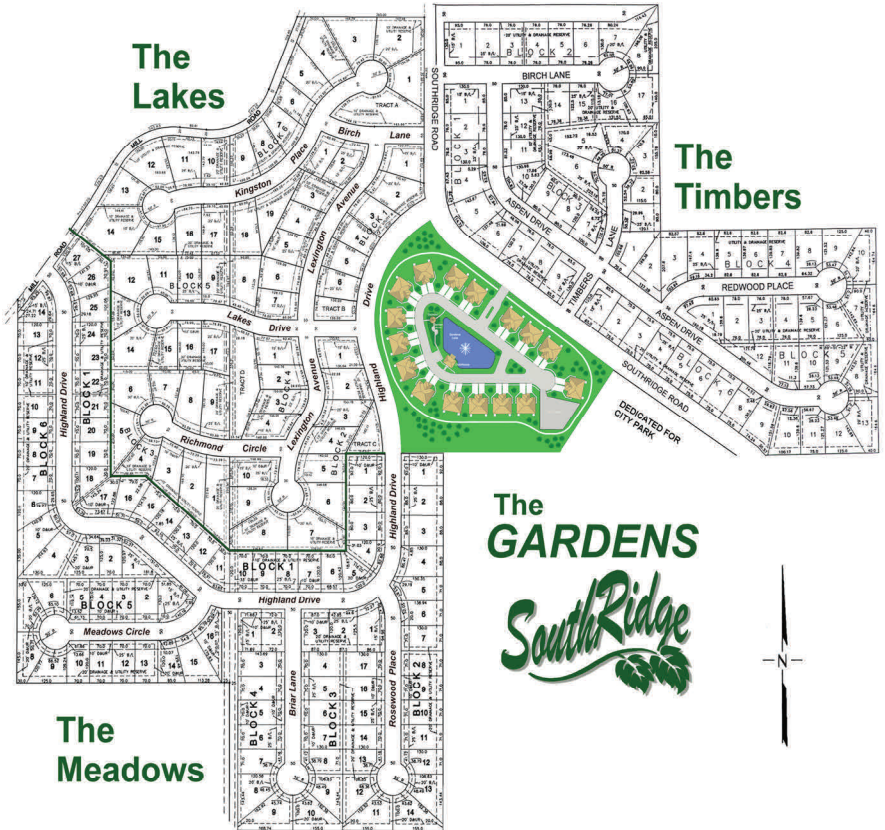
# OUTSTANDING LOCATION

## The Gardens of SouthRidge

### A Premier Gated Community



Located in the Heart of Tahlequah's New Prestigious Residential District, the Gardens Community is unlike no other in the area, providing Security and a Quality Residential Environment. Garden Lake and the Clubhouse are the focus of this Community surrounded by the Attractive Quality Patio Homes.



SEE COMPLETE DETAILS AT ....

[www.GardensofSouthridge.com](http://www.GardensofSouthridge.com)

[info@southridge.net](mailto:info@southridge.net)

SouthRidge is Located 3/4 Mile South of the Muskogee Ave & Highway 62 Bypass Intersection.  
Turn West on Southridge Road... Gardens is Located 1/4 mile on left.